

## School Nurse Ready Room



5 Year  
Limited  
Warranty

CLINTON  
**Ready Room**™

*an all-inclusive Clinton exclusive*

Perfect for school nurse's office or infirmary, School Nurse Ready Room eliminates the hassle of multi-sourcing individual items. Ready Room offers a one stop shop that makes ordering, delivery and set-up easier than ever.

*(no model substitutions, your choice of Classic Clinton laminate and upholstery colors)*

# MODEL 3620-27-RR

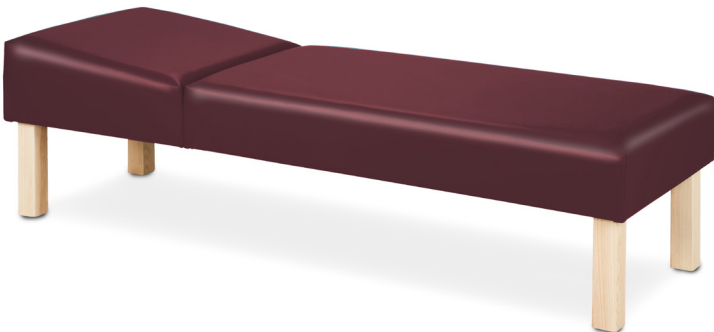
**PACKAGE INCLUDES:**

- 3620-27-016 with Adjustable, Wedge Headrest in your choice of upholstery colors
- 8248 Wall Cabinets in your choice of laminate colors
- 8048-99 Base Cabinets with desk in your choice of laminate colors, plus stainless steel sink and chrome faucet set (choose right or left location or no sink. If no location is selected, sink will be placed as shown.)
- 2135 in your choice of upholstery colors
- TR-20W 20-Quart, Large Round, White Enamel Steel, Waste Receptacle
- GS-3000 Single, Stainless Steel,\* Glove Box Holder
- C-40B Premium, Padded, Side Chair in your choice of upholstery colors

*\* Not MRI Compatible*

## 3620-27 Hardwood Leg Couch

- Dual frame construction with separate base & headrest sections
- Non-adjustable wedge headrest
- Solid, natural finish, hardwood legs
- Paper dispenser included
- 2" firm foam padding
- Heavyweight, knitbacked upholstery
- 250 lbs. load capacity under normal use



**Prop 65 Warning**



**WARNING:** This product can expose you to chemicals, including diisononyl phthalate (DINP), which is known to the State of California to cause cancer. For more information go to [www.P65Warnings.ca.gov](http://www.P65Warnings.ca.gov).

2

**SPECIFICATIONS**

72" L x 27" W x 18" H

**Upholstery Colors**



*Slate Blue*



*Wedgewood*



*Royal Blue*



*Desert Tan*



*Burgundy*



*Country Mist*



*Warm Gray*



*Gunmetal*



*Black*

## 8248 Wall Cabinet

- Wall cabinet with 2 doors and 1 adjustable shelf
- Easy-clean, all laminate surface
- Tough, chip resistant edges
- Unit is pre-assembled to save installation time
- Cabinet easily mounts with hook and rail mounting system
- Satin finish pulls
- Choice of solid color or woodgrain laminates
- Fully adjustable, concealed, soft-close hinges

## 8048-99 Base Cabinet with Desk

- Base cabinet with 2 doors, 5 drawers and 1 adjustable shelf, plus stainless steel sink and chrome faucet set.  
(Choose right or left sink location, or no sink.  
If no sink location is selected, sink will be placed as shown.)
- Desk with drawer (Choose right or left desk location.)
- Easy-clean, all laminate surfaces
- Cabinets ship as one unit, desk ships separate
- All holes are pre-drilled and all hardware is provided to connect the desk to the cabinets
- Adjustable, self-closing drawers hold up to 75 lbs.
- Concealed, soft-close, door hinges
- 3.25" backsplash included with top
- All sink openings are pre-cut in tops for easy installation
- Satin finish pulls

### 8248 SPECIFICATIONS

48" W x 12" D x 24" H

### 8048-99 SPECIFICATIONS

48" W x 18" D x 35" H

### DESK SPECIFICATIONS

24" W x 18" D x 30" H

CLASSIC CLINTON  
• LAMINATE CASEWORK •



### Prop 65 Warning

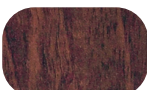
**WARNING:** This product can expose you to chemicals, including chromium, which is known to the State of California to cause cancer or reproductive toxicity. For more information go to [www.P65Warnings.ca.gov](http://www.P65Warnings.ca.gov).

1

### Finishes



Maple



Dark Cherry



Gray



Slate Gray

## GS-3000 Single, Stainless Steel,\* Glove Box Holder

- Stainless steel construction
- Open design allows for easy glove identification
- All units mount horizontal or vertical
- Mounting hardware included
- Universal size fits most glove boxes

\*Clinton stainless steel items are not M.R.I. compatible.

### SPECIFICATIONS

10" L x 3.75" D x 5.5" H



Shown in the horizontal position

### Prop 65 Warning

**WARNING:** This product can expose you to chemicals, including chromium, which is known to the State of California to cause cancer or reproductive toxicity. For more information go to [www.P65Warnings.ca.gov](http://www.P65Warnings.ca.gov).

1

## 2135 Black Base, 5-Leg, Pneumatic Stool

- One-piece, American-made, Black, nylon base
- Full size diameter top and base for comfort and stability
- 5-leg design for greater stability
- Firm polyfoam padding
- 4" thick seat for extra comfort
- 2.5" dual wheel casters
- Single lever, pneumatic height adjustment
- All seats have 3/4" thick solid plywood base
- Premium, stain-resistant, woven, knit-backed, vinyl upholstery
- Easy, no tools required assembly
- 250 lbs. load capacity under normal use

### SPECIFICATIONS

Seat Diameter	16"
Base Diameter	24"
Height Range	19"-24"



### Prop 65 Warning

**WARNING:** This product can expose you to chemicals, including diisononyl phthalate (DINP), which is known to the State of California to cause cancer. For more information go to [www.P65Warnings.ca.gov](http://www.P65Warnings.ca.gov).

2

## TR-20S Medium, Round, White, Waste Receptacle

- All steel outer shell and lid
- White enamel finish
- Step-on foot pedal operated lid
- One-piece, plastic base keeps metal from contact with floor surface
- Chrome Handle make moving and cleaning easy
- 2 warning labels included
- 20 L capacity (21.13 quartss)

### SPECIFICATIONS

10" D X 24"H



### Prop 65 Warning

**WARNING:** This product can expose you to chemicals, including chromium, which is known to the State of California to cause cancer or reproductive toxicity. For more information go to [www.P65Warnings.ca.gov](http://www.P65Warnings.ca.gov).

1

## C-40B Premium, Padded, Black Frame Side Chair Without Arms

- Black powder coated frame finish
- Heavy duty 1-1/2" diameter legs
- Solid plywood seat and back
- Wall saver guard
- 2" thick, firm foam padded seat and back
- Contoured seat and back
- Adjustable leg levellers
- Premium, knit-backed upholstery
- 300 lbs. load capacity under normal use

### SPECIFICATIONS

Seat	18" W x 18" D
Seat Height	18"



### Prop 65 Warning

**WARNING:** This product can expose you to chemicals including 1, 3-Butadiene which is known to the State of California to cause cancer and reproductive harm. For more information go to: [www.P65Warning.ca.gov](http://www.P65Warning.ca.gov).

7

### Upholstery Colors



Slate Blue

Wedgewood

Royal Blue

Desert Tan

Burgundy

Country Mist

Warm Gray

Gunmetal

Black