

Flat Top, Classic Series, Straight Line Treatment Table with Shelving



MODEL 300

- No upcharge for flat top
- Ultra-durable, PVC-laminated, hardwood legs
- H-brace construction
- Tiered shelving unit and shelf in Natural or Dark Cherry laminate to coordinate with frame
- Legs have pre-inserted carriage bolts for fast easy assembly
- Seamless, rounded corner top
- 2" of firm foam padding (5 cm)
- Available in Natural and Dark Cherry finish
- Choice of upholstery colors
- Fast, easy assembly with basic tools
- 400 lbs. load capacity under normal use (181 kg)

SPECIFICATIONS

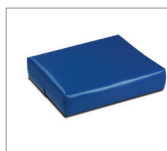
300-27	72" L x 27" W x 31" H
300-30	72" L x 30" W x 31" H
300-38	78" L x 30" W x 31" H

California residents please be advised of the following, pursuant to Proposition 65:

! **WARNING:** This product can expose you to chemicals, including diisononyl phthalate (DINP), which is known to the State of California to cause cancer. For more information go to www.P65Warnings.ca.gov.

2

Options



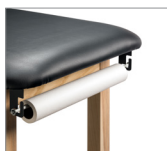
20- small Pillow



034- Paper Dispenser & Cutter Combo



040- Paper Cutter



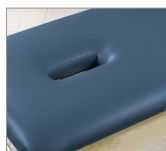
030- Paper Dispenser



005- Special Height



006- Special Length



009- Nose Hole

Finishes



Natural



Dark Cherry

Upholstery Colors



Slate Blue



Wedgewood



Royal Blue



Desert Tan



Burgundy



Country Mist



Warm Gray



Gunmetal



Black