

Panel Leg Series, Treatment Table with Shelf & Drawers



MODELS: 91013-27 & 91013-30

- No upcharge for adjustable backrest
- All laminate construction
- Sleek panel leg design
- Laminate shelf & two drawers with easy-clean, plastic interiors
- Adjustable backrest with 6 settings of approximately: 27°, 36°, 43°, 50°, 55° & 60°
- Scratch resistant topcoat finish
- Ships flat for easy handling and extra savings
- Fast and easy assembly
- Seamless, rounded corner top
- 2" firm foam padding (5 cm)
- Heavyweight, knit-backed upholstery
- 400 lbs. load capacity under normal use (181 kg)

SPECIFICATIONS

91013-27	72" L x 27" W x 31" H
91013-30	72" L x 30" W x 31" H



Prop 65 Warning

! **WARNING:** This product can expose you to chemicals, including chromium, which is known to the State of California to cause cancer or reproductive toxicity. For more information go to www.P65Warnings.ca.gov.

Options



034– Paper Dispenser & Holder Combo



040– Paper Holder



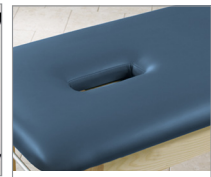
030– Paper Dispenser



088–Flat Top



055– Door & Drawer Locks



009–Nose Hole

Laminate Colors



Gray



Maple



Dark Cherry

Upholstery Colors



Slate Blue



Wedgewood



Royal Blue



Desert Tan



Burgundy



Country Mist



Warm Gray



Gunmetal



Black