

# DUS 60

## Ultrasound

---



Intuitive Design



Compact & Versatile



12.1" LCD Monitor

The DUS 60 is an impressive black & white compact ultrasound system, providing superb value and the best quality across the entire range of applications, with enhanced support of PW imaging to meet the higher diagnostic requirements.

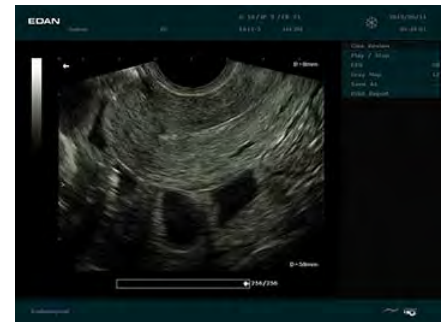
## Features:

- Two USB ports
- Backlit keyboard
- DICOM 3.0 included
- Two transducer connectors
- 504 MB built-in image storage
- 256-frame cine loop memory
- Image Processing function
- Measurement & calculation software package



**Imaging Modes:** B mode, M mode, 2B, 4B, B+M, and PW Doppler

**Applications:** Abdomen, Obstetrics, Gynecology, Small Parts, Musculoskeletal, Cardiology Peripheral Vascular, Urology



## Probe Selection



### C361-2

**APPLICATION:** Abdomen, OB, Gynecology, Urology

**TRANSDUCER:** Convex

**BANDWIDTH (MHz):** 1.5-7 (-20dB), 2-6 (-6dB)



### L743-2

**APPLICATION:** Small Parts, vascular

**TRANSDUCER:** Linear

**BANDWIDTH (MHz):** 3-11 (-20dB), 5-10 (-6dB)



### L761-2

**APPLICATION:** Small Parts, Musculoskeletal, Vascular

**TRANSDUCER:** Linear

**BANDWIDTH (MHz):** 3-11 (-20dB), 5-10 (-6dB)



### C611-2

**APPLICATION:** Pediatric, Pediatric Cardiac

**TRANSDUCER:** Micro-Convex

**BANDWIDTH (MHz):** 3.5-12 (-20dB), 5-8 (-6dB)



### E611-2

**APPLICATION:** OB, Gynecology, Urology

**TRANSDUCER:** Transvaginal

**BANDWIDTH (MHz):** 3-11.5 (-20dB), 5-8 (-6dB)



### E741-2

**APPLICATION:** Urology

**TRANSDUCER:** Endorectal

**BANDWIDTH (MHz):** 3-11.5 (-20dB), 5-10 (-6dB)

## Included Accessories

- Rechargeable Lithium-Ion Battery (5000mAh) — **01.21.064356**
- Power Cord (USA Standard) — **11.13.36015**
- Carrying Case
- Ultrasound Gel (250g)

## Optional Accessories

- MT-805 Luxury Mobile Trolley — **MT-805**
- SONY UP-X898MD, S-Video/USB interface. Black and white video graphic printer — **UP-X898MD**

# Specifications

## PHYSICAL SPECIFICATION

Dimension:  
32 cm×22 cm×33 cm  
Weight: 7.1 kg

## DISPLAY

12.1" TFT-LCD monitor  
Resolution: 1024 x 768  
Imaging field size: 640 x 512  
Video out size: 1024 x 680  
Capture Size:  
BMP, JPG, AVI, DCM 1024 x 768; FRM, CIN 640 x 512

## BATTERY

Rechargeable lithium ion battery  
Capacity: 5000mAh  
Battery Life: 60 minutes  
Max charging time: 8 hours

## ELECTRICAL POWER

Voltage: 110V 240VAC  
Frequency: 50/50 Hz  
Power: 74.4w

## IMAGING STORAGE

504MB for data storage  
320GB hard drive  
Storage:  
224 static images as BMP format(memory)  
Hard Drive Storage:  
145,635 static images as BMP format  
Maximum Clip:  
B mode: 256 frames  
M mode: 23s  
PW Doppler mode: 10s

## IMAGING PARAMETERS

### B-mode

Image Type :  
Detail/Soft/HContrast/  
Penetration)  
Zoom:  
7 levels, x1.44, 96, x2.56, x4.0, x5.76, x9.0, x16.0 (available on live state); 7 levels: x1.31, x1.78, x2.56, x4.0, x7.11, x10.24, x16.0 (available on freeze state)  
Depth: 1.9-32.4 cm  
Frequency:  
2.0 15.0MHz  
eSRI: 0 8  
Rejection: 0-7  
Scan Angle : 0-3  
Gain: 0-13 0dB, 2 dB/step  
TGC: 8 segments  
Dynamic Range:  
30-150 dB  
4 dB/step

Scan Mode: Hiden/HiFR  
Max Frame rate : 244 f/s  
Map : 0-14  
Frame Persist: 0-7  
Focus Position: 0-15  
Focus Number: 1-4  
Pseudo color : 6 types  
H Reverse: On/Off  
V Reverse: On/Off  
90° rotation: 0/1/2/3  
B/W Invert: On/Off  
Spatial compounding:  
On/Off (max 3 angles)  
Display format:  
single(B),dual(B+B)  
Quad 4B: ( B, 2B, 4B)

### M-mode

Sweep speed: 0-3  
Line Average : 0-7  
Gray Map : 0-14  
Pseudo Color : 6 types  
Gain: 0 13 0dB, 2 dB/step  
Frequency : 2.0 15.0MHz  
(3 fundamental and 2 harmonic frequencies)  
Dynamic range:  
30-150 dB  
step 4 dB/step  
B/M Display : U/D, L/R

### Pulsed Wave Doppler

Flow Type : H Flow/M Flow/L Flow  
HPRF : On/Off  
Duplex and Triplex displays  
Frequency: 2.5-8.0 MHz  
PRF: 16 levels 1-15 kHz  
Gain: 1-80dB, 1dB/step  
Dynamic range: 30-90 dB, 2 dB/step  
Wall Filter: 0-3  
Sweep Speed:  
0(10.3 s), 1(7.95 s),  
2(5.19 s), 3(3.97 s),  
4(2.75 s), 5(1.53 s)  
Baseline: 0-6  
Correct Angle: -79°, 1° /step  
Quick Angle:  
-79°/-60°/-30°/0°/30°/60°/79°  
Steer: 0°, ± 10°  
Invert : On/Off  
Volume: 0-7  
Pseudo Color : 6 types  
Sample Volume :  
16 levels, 0.5-20 mm

## CINE REVIEW

Frame by frame manual review  
Auto playback  
Start frame and end frame are selectable for cine loop review  
Maximum cine memory is up to:  
B mode: 256 frame  
M mode: 23s  
PW Doppler mode: 10s