

A close-up photograph of a white medical examination chair. The chair has a thick, padded seat and a backrest that is partially visible. The base of the chair is white and features a control panel with two electrical outlets and a circular button. The background is a plain, light-colored wall. The overall aesthetic is clean and professional.

Ritter®

MEDICAL

224 + 225 Barrier-Free® Examination Chairs

224 + 225 Barrier-Free[®] Exam Chairs

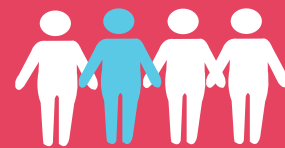
Your patients are changing. The number of elderly and obese in the US is steadily growing, and one fourth of adults in America are disabled.¹ Assisting patients with mobility limitations onto exam chairs has become a frequently performed task. As a result, caregivers working in healthcare facilities are one of the most at-risk professions for musculoskeletal disorders.²

Exam tables in ambulatory settings typically have a fixed height of 33 inches, requiring caregivers to assist or lift patients with mobility limitations. In some cases, patients are unable to get onto the exam table—this inhibits the exam process, lowers the quality of care received and diminishes desired outcomes.



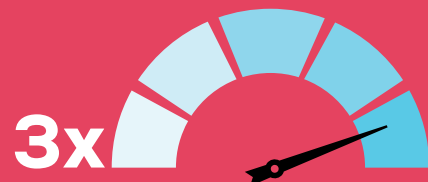
1 in 5

Adults will be retirement age by 2030. For the first time in US history, older adults are projected to outnumber children by 2034.³



1 in 4

Adults in the US have some form of disability.⁴



Healthcare workers are nearly three times more likely to suffer from work-related injuries than construction workers.⁵

We can help.

Ritter[®] Barrier-Free Examination Chairs by Midmark adjust in height from 18-37 inches, improving accessibility to the exam chair and reducing the likelihood of staff injury. In a recent study, caregivers reported dramatically less perceived physical exertion when using a height-adjustable exam chair versus a fixed-height table. In fact, caregivers have reported an actual 95% to 98% reduction in perceived physical exertion when using a height-adjustable exam chair versus a fixed-height table.⁶



BETTER ACCESSIBILITY

Ritter 224 and 225 Barrier-Free exam chairs are designed to offer low and high positioning heights so you can provide better care to patients regardless of disability or other limitations.



The path to better care begins with a better vital signs process.

Vital signs are the beginning of the patient-caregiver interaction, providing critical information related to changes in patient health and playing an important role in a physician's treatment decisions. The integration of EMRs, new technologies and automated devices can have a significant impact on the overall efficiency of the process. In fact, by bringing all vital signs capture (including weight) to the point of care using an automated device, you can save over a minute per patient.

Using a Ritter® Barrier-Free exam chair with an automated vital signs device like the Midmark® Digital Vital Signs Device allows you to automate vital signs capture at the point of care, saving time and reducing transcription errors. Once vital signs data is captured, it can be imported directly into the EMR.



Midmark Digital Vital Signs Device shown with Exergen® TemporalScanner® thermometer and optional Masimo® SpO₂.

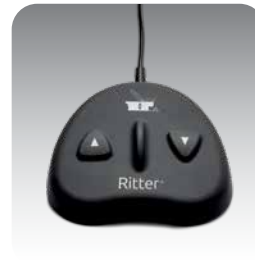


Accessories
help add
versatility +
function to
your exam
chair

STANDARD FEATURES



Stirrups + Pelvic Tilt*
Help position patients properly and comfortably for lower-body examinations.



Foot Control
Standard foot control designed to make patient positioning quick, effective and always within reach.



Tamper-Resistant Receptacles*
Receptacles on both sides of the chair provide a power connection for devices.



Accessory Receivers
Standard receivers allow for the integration of accessories without the use of tools.

OPTIONAL FEATURE



Clean Assist Roller System
The retractable roller base allows you to safely move the chair for cleaning.



OPTIONAL ACCESSORIES



Patient Support Rails+
Help achieve proper positioning of the patient's arm for blood pressure capture.



Patient Support Rails
Provide patients with a 1¼ inch diameter continuous gripping surface for entering, exiting or repositioning on the exam chair.



Assist Arms
Provide patients with a stable gripping surface for entering, exiting or repositioning on the exam chair.



Ritter® 253 LED Exam Light
Designed with easy access controls, high-intensity light and an adjustable focal spot. Available in chair mount, wall mount and mobile options.



Articulating Knee Crutches
The unique ball-socket design allows for a maximum range of adjustment, designed to ensure optimum knee and leg support.



Stainless Steel Debris Tray
Ideal for lower-body procedures or other situations in which removal of fluid and debris is necessary.



Supply Assistant
Provides extra storage for bulky exam supplies. Keeps drapes, gowns and similar items within easy reach.



Thick Footrest Pad
Enhance patient comfort during medical examinations with the thick footrest pad accessory.

*Not available on 224-001 model

SPECIFICATIONS

FEATURES

The Ritter® 224 has a gas-spring assisted back section with an easy access backrest mechanism while the Ritter 225 has a power back system. Both have adjustable low and high heights, built-in pillows, hideaway stirrups that lock in one of four lateral positions, foot extension shelves to expand the chair length, paper roll holders hidden under the headrest, storage for one 24" x 3.56" diameter paper roll, polystyrene debris tray*, foot control and leveling feet.

*No debris tray available for model 224-001.

Patient Weight Capacity:

500 lb (227 kg)

Height:

Uncompressed Seat Height:

18" Low/37" High

(46 cm/94 cm)

Seamless Upholstery Dimensions:

28" W x 60" L

(71 cm/152 cm)

Length with Footrest (16") Extended:

76" (193 cm)

Pelvic Tilt: 5 1/5°

Heated Drawer: 24.6 W

Heated Drawer Temperature:

92°F to 112°F at 115 VAC input

voltage, 70°F ambient

Paper Roll Holder: Holds 24" x

3.56" dia. paper roll (61 cm x 9 cm)

Receptacle Electrical Draw: 4 A

Hospital-grade, electrical receptacles

on left and right sides

Chair Weight: 409 lb (185 kg)

Shipping Weight: 465 lb (211 kg)

Electrical Ratings

224-001: 115 VAC, 50/60 Hz, 9 A

224-002: 115 VAC, 50/60 Hz, 11.5 A

224-003: 115 VAC, 50/60 Hz, 11.5 A

225-002: 115 VAC, 50/60 Hz, 11.5 A

225-003: 115 VAC, 50/60 Hz, 11.5 A

ACCESSORIES

Patient Support Rails+

Patient Support Rails

Assist Arms

Supply Assistant

Articulating Knee Crutches

Stainless Steel Debris Tray

Ritter 253 LED Exam Light

Thick Footrest Pad

Wired Hand Control (225 only)

STANDARD UPHOLSTERY COLORS

-  Mist 813
-  Stone 814
-  Restful Path 858
-  Iron Ore 851
-  Lunar Gray 845
-  Obsidian 857
-  Oasis 843
-  Soothing Blue 855
-  Dream 847
-  Mineral 844
-  Healing Waters 848
-  Shaded Garden 853
-  Citrus 849
-  Sandy Retreat 850
-  Curative Copper 846
-  Cranberry 859
-  Dark Linen 856
-  Latte 860
-  Robust Brown 852
-  Deep Earth 854

ULTRAFREE* UPHOLSTERY COLORS

-  Stone 865
-  Restful Path 868
-  Obsidian 867
-  Harbor 861
-  Wheatgrass 862
-  Spice 863
-  Cranberry 869
-  Dark Linen 866
-  Latte 870
-  Branch 864

*ULTRALEATHER® by Ultrafabrics

RITTER 224/225 COMPARISON CHART

	18" Seat Height (Uncompressed)	500 lb Weight Capacity	Power Base	Standard Rail Accessory Receivers	Power Back	Clean Assist Roller System	Active Sensing Technology*	Drawer Heater + Pelvic Tilt	Tamper-Resistant Electrical Receptacles	Debris Tray
225-002	•	•	•	•	•		•	•	•	•
225-003	•	•	•	•	•	•	•	•	•	•
224-001	•	•	•	•						
224-002	•	•	•	•			•	•	•	•
224-003	•	•	•	•		•	•	•	•	•

SOURCES

- 01 <https://www.census.gov/newsroom/press-releases/2018/cb18-41-population-projections.html>; <https://pubmed.ncbi.nlm.nih.gov/31851800/>; <https://www.cdc.gov/ncbddd/disabilityandhealth/infographic-disability-impacts-all.html#:~:text=61%20million%20adults%20in%20>
- 02 <https://www.bls.gov/iif/factsheets/msds.htm>
- 03 <https://www.census.gov/newsroom/press-releases/2018/cb18-41-population-projections.html>
- 04 <https://www.cdc.gov/ncbddd/disabilityandhealth/infographic-disability-impacts-all.html#:~:text=61%20million%20adults%20in%20>
- 05 <https://www.bls.gov/charts/injuries-and-illnesses/number-and-rate-of-nonfatal-work-injuries-by-industry.htm>
- 06 Reducing Risk: Fragala G. Reducing Occupational Risk to Ambulatory Caregivers. Workplace Health Saf. 2016 Sep;64(9):414-9. doi: 10.1177/2165079916642776. Epub 2016 May 12. PMID: 27174130



CARB 93129.2 Phase 2 Compliant and TSCA Title VI Compliant
(applicable products)

The color examples shown are the best representation of the original material. Actual color may vary slightly. We strongly recommend that you contact Midmark Customer Experience at 1.800.MIDMARK to request a sample before placing your order.

Midmark is an ISO 13485 and ISO 9001 Certified Company. Certain products are not included. See the complete list at: midmark.com/ISO

Exergen and TemporalScanner are trademarks of Exergen Corporation.

For more information, contact your Midmark dealer or call: 1.800.MIDMARK
Outside the USA call: 1.937.526.3662
or visit our website: midmark.com

© 2023 Midmark Corporation, Versailles, Ohio USA
Products subject to improvement changes without notice.
Litho in USA.

007-10154-00 Rev. C1 (12/23)

Ritter®